



# COLONIAL GREEN

Welcome to the James.



The **Crescent Homes** in Colonial Green offer a luxury lifestyle opportunity while providing the conveniences of townhome living. Featuring appointments typically reserved for custom building, these homes display an appreciation for quality construction and distinctive detailing.

The **James** features large open spaces on the main level perfect for entertaining. The Kitchen is centrally located to function as the hub of activity. A private Study with built in shelving provides for that private area. Capturing the magnificent view towards the front of the home, the James capitalizes on the specific attributes of these beautiful home-sites.

Gracious Neighborhood Living.



**RE/MAX**<sup>®</sup>  
Valley, REALTORS

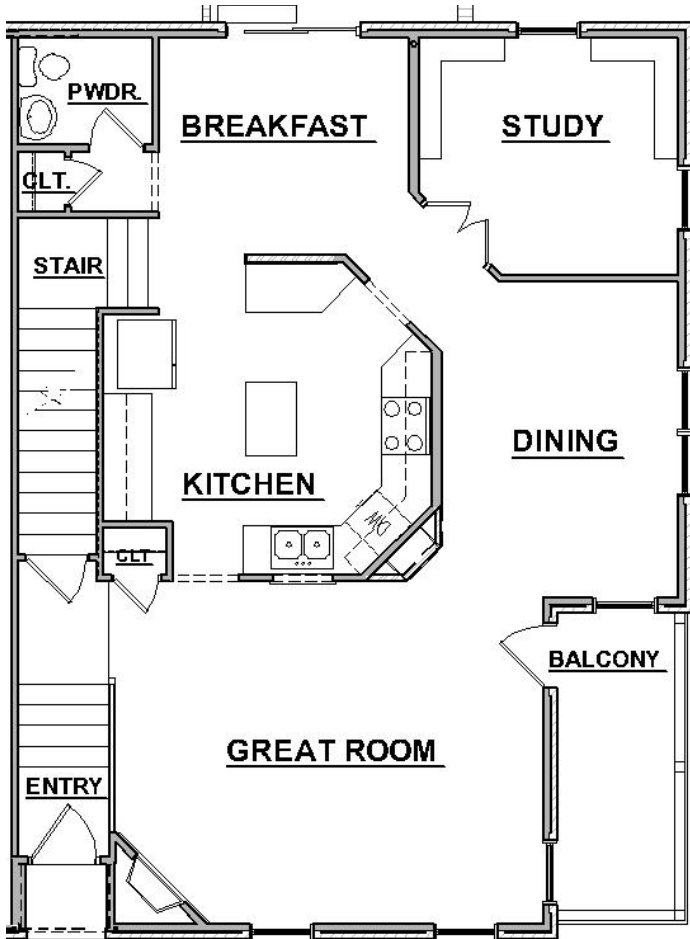
Tom Wilson, Beth Wilson, and Becky Fields  
The "Wilson Team"



All renderings and floorplans are artist's concept. Final home may vary.



# The James Floor Plan.

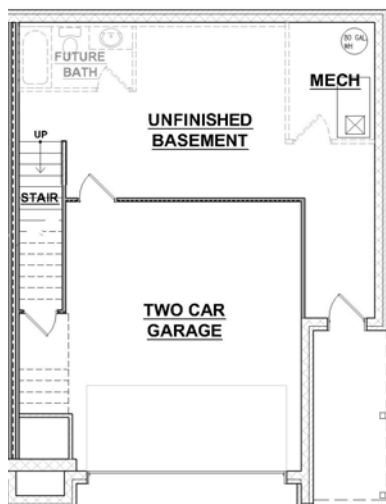
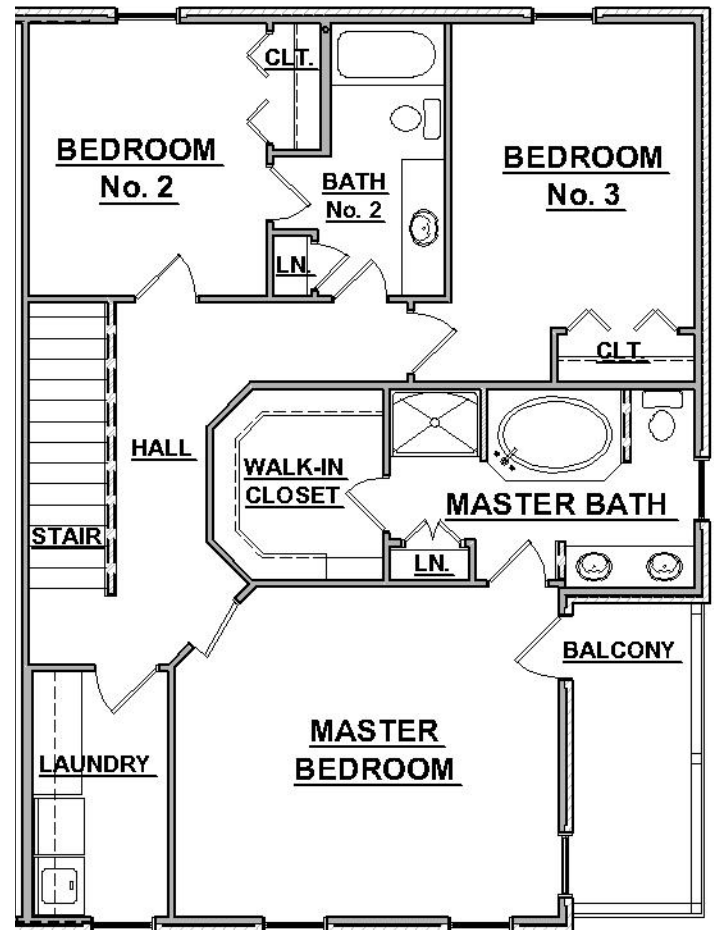


## Main Level Floor Plan

- 1105 finished square feet
- Dining: 11' X 14'
- Study: 10'-6" X 11'-6"
- Kitchen: 12' X 14'
- Breakfast: 10' X 12'
- Great Room: 19' X 15'
- Balcony: 14' X 6'

## Upper Level Floor Plan

- 1118 finished square feet
- Master Bedroom 17' X 14'-6"
- Bedroom No. 2: 12' x 10'-6"
- Bedroom No. 3: 14' x 10'-6"



## Lower Level Floor Plan

- 527 Square feet
- Two car garage
- Rough-in for future bathroom

Progress Street Builders strives to ensure that information presented on the brochure cards is accurate. However, at any time prices, floorplans, and specifications are subject to change. Photos and/or drawings of homes may show upgraded landscaping or other options. Model homes are frequently furnished and are not always representative of standard finishes. Please consult a Progress Street Builders representative for details about a specific home.

Room dimensions and square footages are approximate and final plans may vary.