

Welcome to the Periwinkle!

The Village



AT TOM'S CREEK

The Periwinkle Floorplan creatively uses the narrow footprint to create a home that lives much larger than its 1700 square feet.

Each home in the "Village" is a unique architectural composition—no two exteriors look alike. New homes are developed by reproducing a floorplan arrangement and a "starting from scratch" with the exterior of the home. Due to this customization of your new home, generic pricing is not possible.

We would be pleased to discuss new home opportunities with you.

Progress Street
BUILDERS



It's Good to be Home!

Phone: (540) 552-1812 Ext. 203

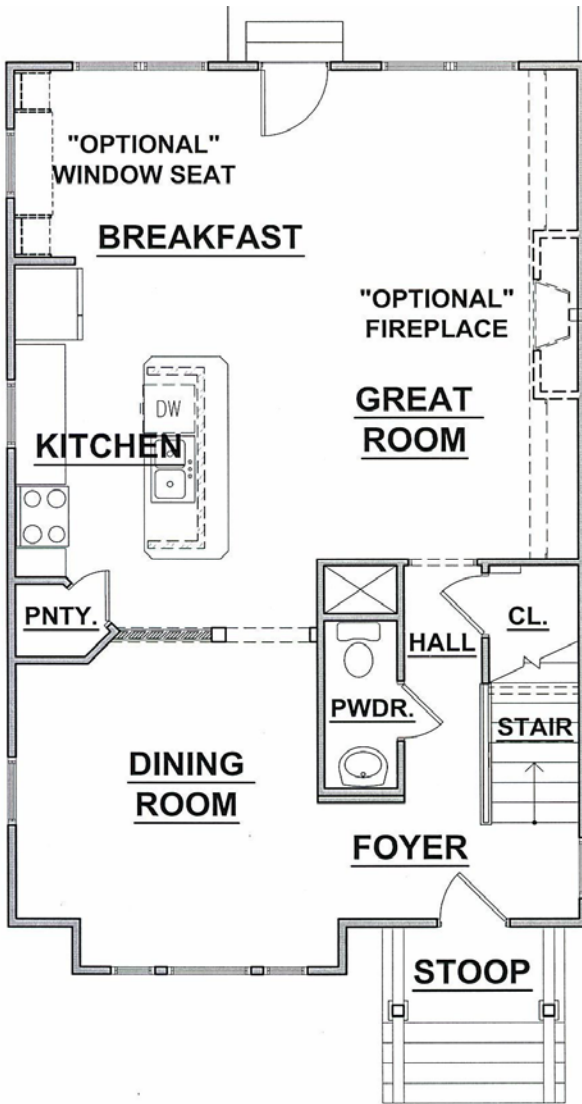
E-mail: Progress@ProgressStreet.com

The Village at Tom's Creek

All renderings and floorplans are artist's concept. Final home may vary.

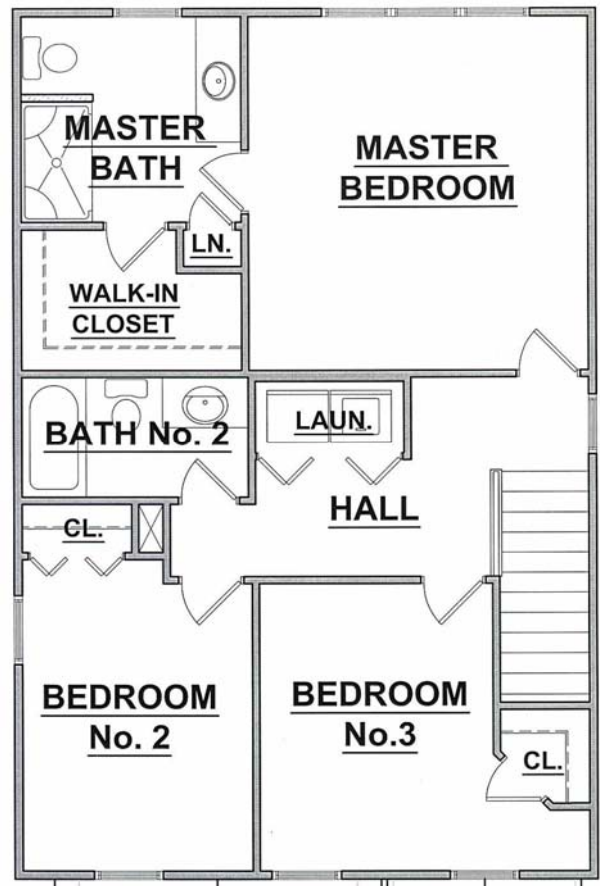
Periwinkle

The Periwinkle Floorplan



Main Level Floor Plan

- 886 finished square feet
- Dining Room: 13' X 12'
- Kitchen: 15' X 12'
- Breakfast Area: 9' X 8'
- Great Room: 16' X 13'



Upper Level Floor Plan

- 864 finished square feet
- Master Bedroom: 15' X 14'
- Bedroom No. 2: 11' x 10'
- Bedroom No. 3: 12' x 10'

Progress Street Builders strives to ensure that information presented on the brochure cards is accurate. However, at any time prices, floorplans, and specifications are subject to change. Photos and/or drawings of homes may show upgraded landscaping or other options. Model homes are frequently furnished and are not always representative of standard finishes. Please consult a Progress Street Builders representative for details about a specific home.



Elevation Concepts

