

Welcome to the Shenandoah!



The Village at Tom's Creek

The Shenandoah Floorplan lives life like you do. With an informal stair location and multiple living spaces on the main and upper levels, this plan's flexibility makes it an obvious choice for your next home.

Each home in the "Village" is a unique architectural composition—no two exteriors look alike. New homes are developed by reproducing a floorplan arrangement and a "starting from scratch" with the exterior of the home. Due to this customization of your new home, generic pricing is not possible.

We would be pleased to discuss new home opportunities with you.

Progress Street
BUILDERS

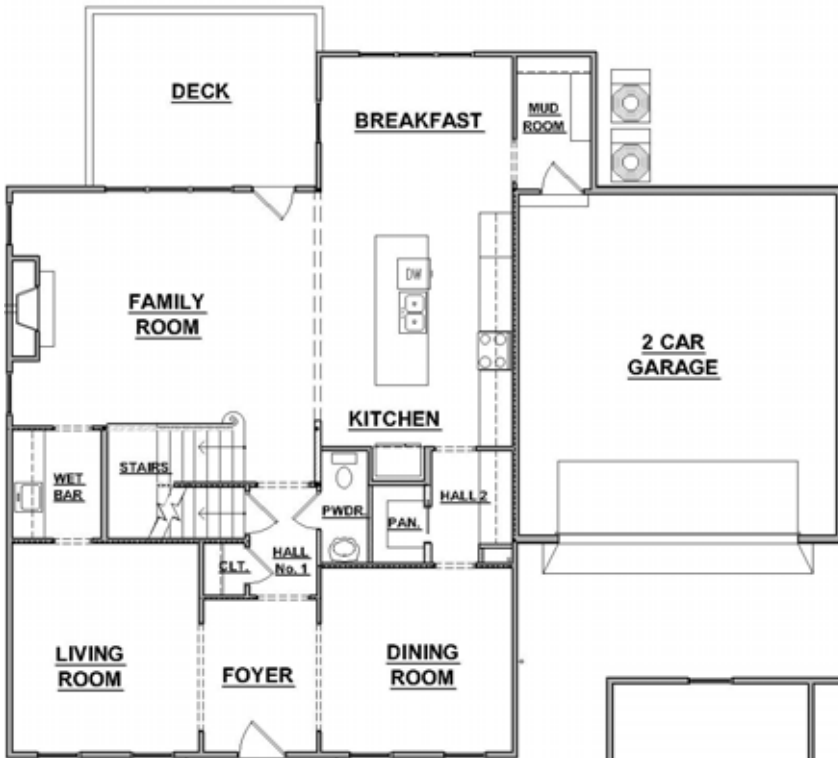


It's Good to be Home!

Phone: (540) 552-1812 Ext. 203

E-mail: Progress@ProgressStreet.com

The Shenandoah Floorplan

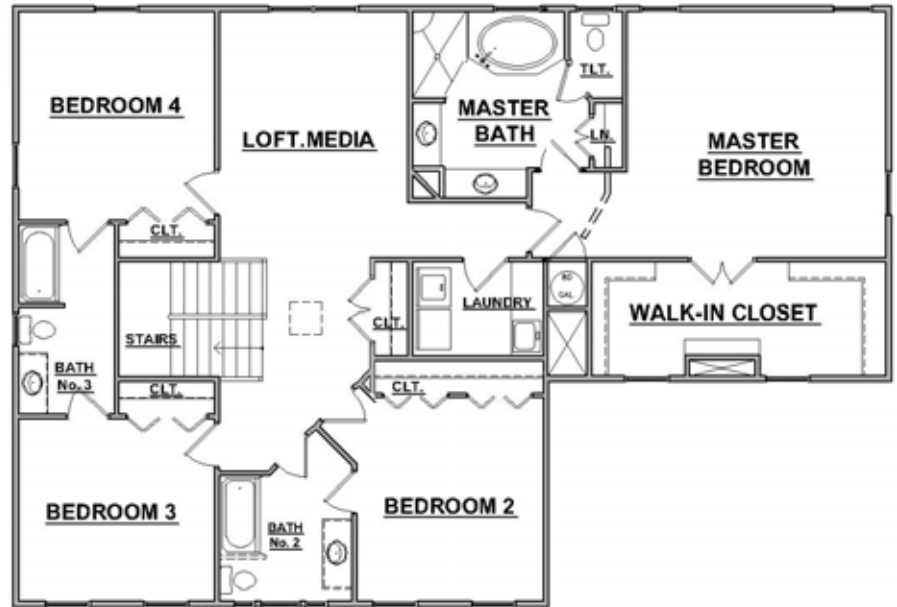


Main Level Floor Plan

- 1471 finished square feet
- Dining Room: 13' X 12'
- Living: 14' X 13'
- Kitchen: 13' X 13'
- Breakfast Area: 13' X 10'
- Family Room: 21' X 15'

Upper Level Floor Plan

- 1817 finished square feet
- Master Bedroom: 16' X 16'
- Bedroom No. 2: 13' x 12'
- Bedroom No. 3: 12' x 12'
- Bedroom No. 4: 13' x 12'
- Loft: 16' x 12'



Basement Level Plan

Basement plan possibilities will vary with site conditions.



Progress Street Builders strives to ensure that information presented on the brochure cards is accurate. However, at any time prices, floorplans, and specifications are subject to change.

Photos and/or drawings of homes may show upgraded landscaping or other options. Model homes are frequently furnished and are not always representative of standard finishes. Please consult a Progress Street Builders representative for details about a specific home.