



COLONIAL GREEN

Welcome to the Deerberry.



The Deerberry Floorplan offers the convenience of one floor living along with a multitude of options, upgrades, and floorplan arrangements to customize this home to your specific needs.

Each home in Colonial Green will be is a unique architectural composition—no two exteriors look alike. New homes are developed by reproducing a floorplan arrangement and a “starting from scratch” with the exterior of the home.

Prices coming Soon!

Gracious Neighborhood Living.



RE/MAX
Valley, REALTORS

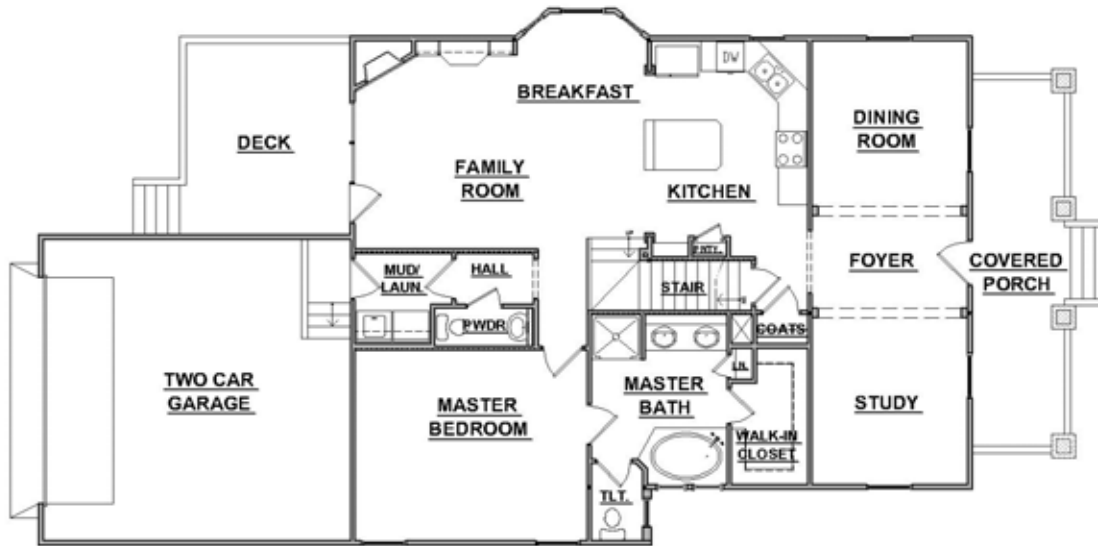


Tom Wilson, Beth Wilson, and Becky Fields
The “Wilson Team”

All renderings and floorplans are artist’s concept. Final home may vary.



The Deerberry Floor Plan.



Main Level Floor Plan

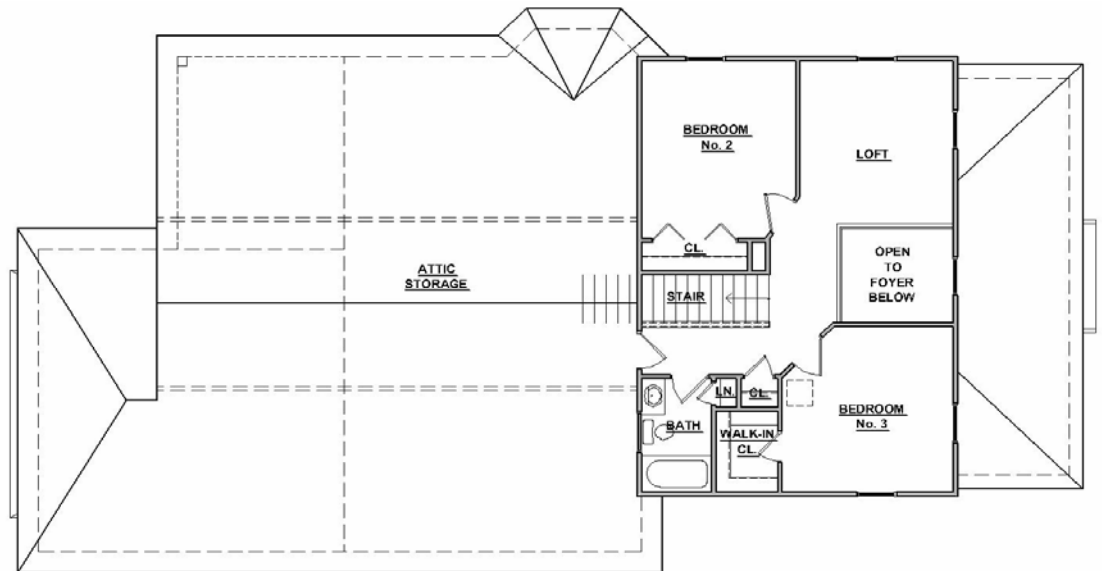
Features one-floor living with large Master Suite and walk-in closet. Formal Dining Room and flexible Study or Living Room. A main level Laundry Room, and open Kitchen and Family Room.

- 1507 finished square feet
- Dining Room: 12' X 11'
- Study: 12' X 11'
- Kitchen: 13' X 11'
- Breakfast Area: 9' X 8'
- Family Room: 21' X 14'
- Master Bedroom: 16' X 14'

Upper Level Floor Plan

Loft area open to main level, two additional large bedrooms, and a full bath.

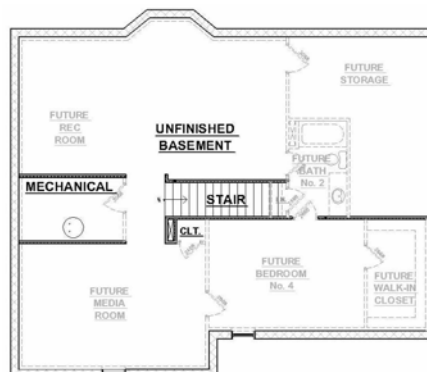
- 681 finished square feet
- Bedroom No. 2: 13' x 11'
- Bedroom No. 3: 12' x 12'
- Loft: 12' x 11'



Lower Level Floor Plan

Walk out lower level

- 1367 square feet
- Optional finished area in lower level



Progress Street Builders strives to ensure that information presented on the brochure cards is accurate. However, at any time prices, floorplans, and specifications are subject to change. Photos and/or drawings of homes may show upgraded landscaping or other options. Model homes are frequently furnished and are not always representative of standard finishes. Please consult a Progress Street Builders representative for details about a specific home.

Room dimensions and square footages are approximate and final plans may vary.