



# COLONIAL GREEN

Welcome to the Rosebay.



**Three Elevation Options  
To Choose From!**

The **Patio Homes** in Colonial Green offer a luxury lifestyle opportunity while providing the conveniences of low maintenance living. Featuring appointments typically reserved for custom building, these homes display an appreciation for quality construction and distinctive detailing.

The **Rosebay** features open spaces on the main level perfect for entertaining. The Kitchen is centrally located to function as the hub of activity. Capturing the magnificent view towards the front of the home, the **Rosebay** capitalizes on the specific attributes of these beautiful home sites.

**Prices coming Soon!**

Gracious Neighborhood Living.



**RE/MAX<sup>®</sup>**  
**Valley, REALTORS**

Tom Wilson, Beth Wilson, and Becky Fields  
The "Wilson Team"

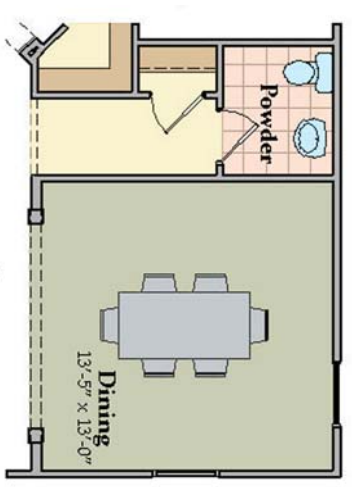
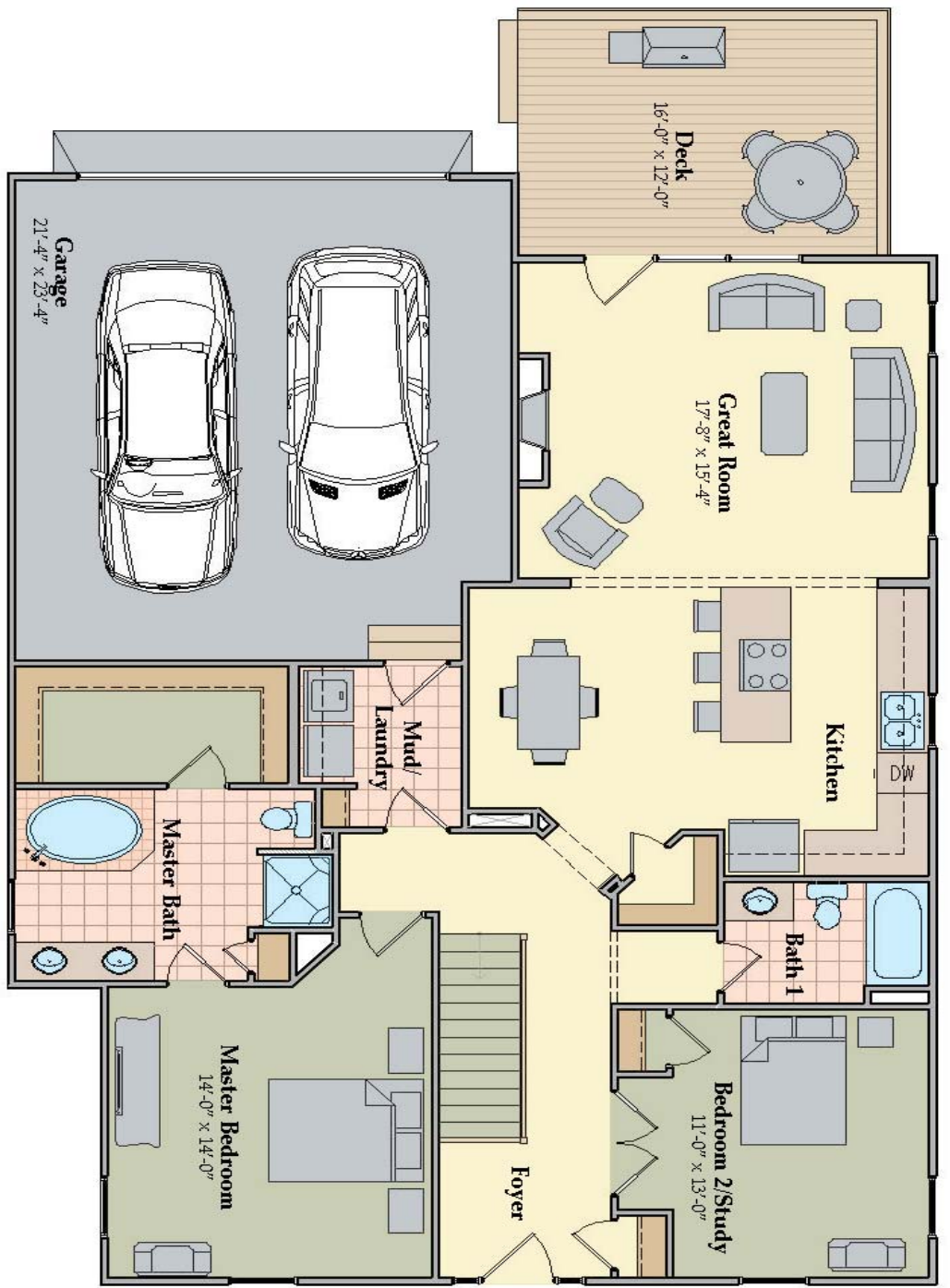


All renderings and floor plans are artist's concept. Final home may vary.



## The Rosebay Floor Plan

- 1,524 Square Feet
- Full, unfinished walkout Basement with rough-in for future full bath
- 90+ efficient natural gas furnace with 13 SEER air conditioner for Main Level and Basement
- 9' ceiling height
- Granite Kitchen countertops
- Custom trim
- Oak hardwood floors in Foyer, Kitchen and Great Room
- Ceramic tile in Bathrooms and Laundry



*Optional Dining Room in lieu of Bedroom 2/Study*

Progress Street Builders strives to ensure that information presented on the brochure cards is accurate. However, at any time prices, floor plans, and specifications are subject to change. Photos and/or drawings of homes may show up-graded landscaping or other options. Model homes are frequently furnished and are not always representative of standard finishes. Please consult a Progress Street Builders representative for details about a specific home.

Room dimensions and square footages are approximate and final plans may vary.